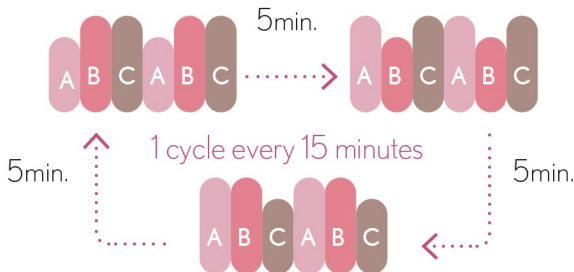




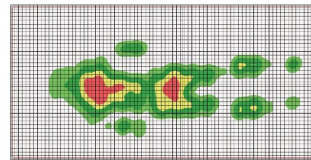
Cococia Fu-ka
Airmattress

A Total of 17 Air Cells Results in Superior Body Pressure Dispersal Performance

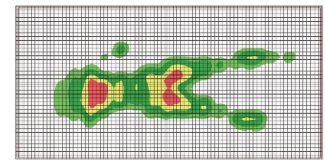
- Within each set of 3 cells, the air pressure in each of the 3 cells changes every 5 minutes.



- Excellent Body Pressure Dispersal Performance. Cococia Fu-ka reduces the risk of pressure ulcers.



Supine Position



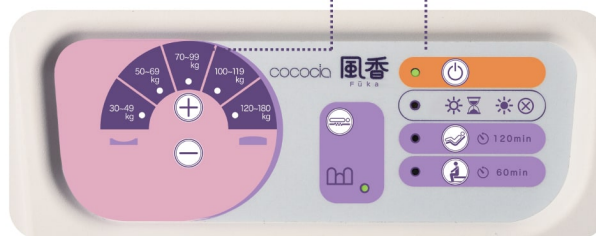
30 Degree Back Raise
10 Degree Knee Raise

Subject: Height 168 cm, Weight 65 kg, Male, Measuring Instrument: X Sensor.

* Ultimately, data is representative of this particular case. Results may differ in other cases.

Degree of Mattress Softness can be Selected to Suit Different Body Dimensions and Weights

The pressure in the air cells, grouped into sets of three, changes at fixed intervals between three levels (low, medium and high) to prevent continuous application of pressure onto any particular part of the mattress user's body.



Mode is Changeable to Suit Different Use Scenarios

- 'Back Raise Mode' facilitates getting up through providing supportive resistance under the buttocks.
- 'Stability Mode' ensures that users can leave the bed or receive assistance safely from a firm mattress surface.

Emergencies are Catered For

- CPR Valve

As the head end of the mattress has a CPR Valve installed, it is possible to quickly drain the air in the mattress without having to use the pump installed at the foot of the mattress.



- Sealed Cap

In the event of an electrical outage, attaching the cap to the coupling stops the outflow of air from the mattress. While the exact duration depends on the use scenario, using the cap allows the volume of air in the mattress to be maintained for over a month.



Compact Pump is Easy to Install

As the board hanger bracket is adjustable, it can be installed on footboards up to 8 cm thick. It takes about 20 minutes for the settings to be complete upon turning on the power.



Specifications



KE-951M (width 910mm): 1,910 x 910 x 130 (mm)

KE-953M (width 830mm): 1,910 x 830 x 130 (mm)

The mattress cover is washable. Sodium Hypochlorite, which effectively eliminates a wide variety of bacteria and viruses, may be used to wipe the mattress cover.